



**Loudoun County**

**VIRGINIA**

WHERE TRADITION MEETS INNOVATION

# Linear Parks and Trails System Overview

Transportation and Land Use Committee Meeting  
February 19, 2020

# The Development of an Implementation Plan

- Kick-off: Engage stakeholders – January 24, 2019
- Stakeholder Presentations – March 14 & 20, 2019
- Public Input Session – April 25, 2019
- Additional PROS Board meetings

## Stakeholder Groups Engaged

Emerald Ribbons Campaign, Loudoun Walking Club, US Trail Riders, MORE-MTB, Potomac Heritage Trail Association, Loudoun Wildlife, Bike Loudoun, PEC, Loudoun Water, NOVA Parks, VDOT, Northern Virginia Regional Commission, Coalition of Local Towns and County Agencies - DTCl, GIS, PRCS

# Summary

## Public Requests

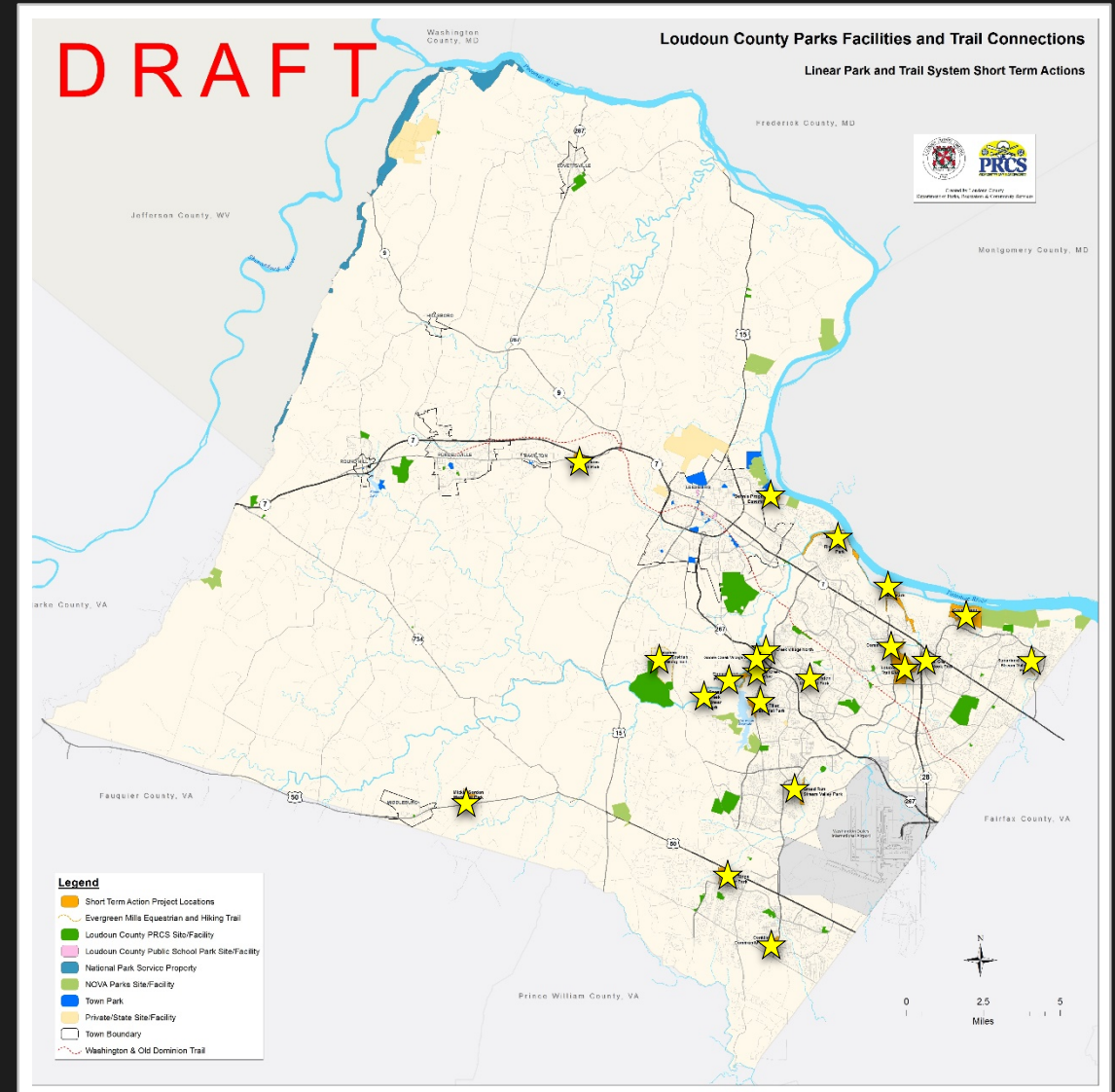
- More trails
- Access to parking for all user groups
- Throughout the County
- Ease of access to system
- Connectedness of system
- Protection of environmental and historical resources

## Original PROS Board Recommendations

- Engage consultant
- Create a Linear Parks and Trails (LPAT) Subcommittee
- Start now with near term projects utilizing stakeholder volunteer help

# Short Term Action Projects

- Bles Park
- Broad Run Stream Valley Park
- Conklin Community Park
- Commonwealth Center
- Loudoun Water Trail Easement
- Evergreen Mills Equestrian, Biking, and Hiking Trail
- Edgar Tillett Memorial Park
- Elizabeth Mills Riverfront Park
- Greg Crittenden Memorial Park
- Goose Creek Linear Park
- Goose Creek Pointe Park
- Goose Creek Preserve
- Goose Creek Village North
- Goose Creek Village South
- Mickie Gordon Memorial Park
- Scott Jenkins Memorial Park
- Stone Ridge Linear Park
- Sugarland Run Stream Valley Park
- Vestal Gap Overlook Park
- Dennis Property Easement
- Countryside Easement



# Additional Trail Projects

- Broad Run Stream Valley Linear Park and Trail
- Goose Creek Stream Valley Linear Park and Trail
- Potomac Heritage National Scenic Trail
- Washington and Old Dominion Trail (connections to)



# Next Steps

- Finalize the scope of work for the development of the Linear Parks and Trails System Plan
- Issue a Request for Proposal (RFP) for a Countywide linear parks and trails plan
- Evaluate all existing trails within parks to determine if they could be multi use or if space is available for additional, parallel trails to be installed for different users
- Continue to work with the stakeholders group and volunteers to complete and open short term projects
- Create an inventory of existing trail easements where trails have not been constructed. Develop a plan for constructing these trails
- Partner with HOAs to connect to existing HOA trail systems
- Research abandoned roads within the county to determine the feasibility of using existing public access easements for trails

Questions?