

Loudoun County, Virginia

www.loudoun.gov

Office of the County Administrator

1 Harrison Street, S.E., 5th Floor, P.O. Box 7000, Leesburg, VA 20177-7000

Telephone (703) 777-0200 • Fax (703) 777-0325

At a business meeting of the Board of Supervisors of Loudoun County, Virginia, held in the County Government Center, Board of Supervisors' Meeting Room, 1 Harrison St., S.E., Leesburg, Virginia, on Wednesday, March 6, 2013 at 4:00 p.m.

IN RE: CORRECTION TO SCRIVENER'S ERROR ON APPROVED MAP FOR METRORAIL SERVICE DISTRICT

Mrs. Volpe moved that the Board of Supervisors: (1) find the map included as Appendix A of the Metrorail Service District adopted on December 5, 2012, contained four minor scrivener's errors where the district line did not precisely follow the boundaries of the parcels listed in Appendix B, and (2) acknowledge and direct the correction of the map included as Appendix A of the Metrorail Service District, as more particularly shown on Map Number 2013-143.

Seconded by Mr. Williams.

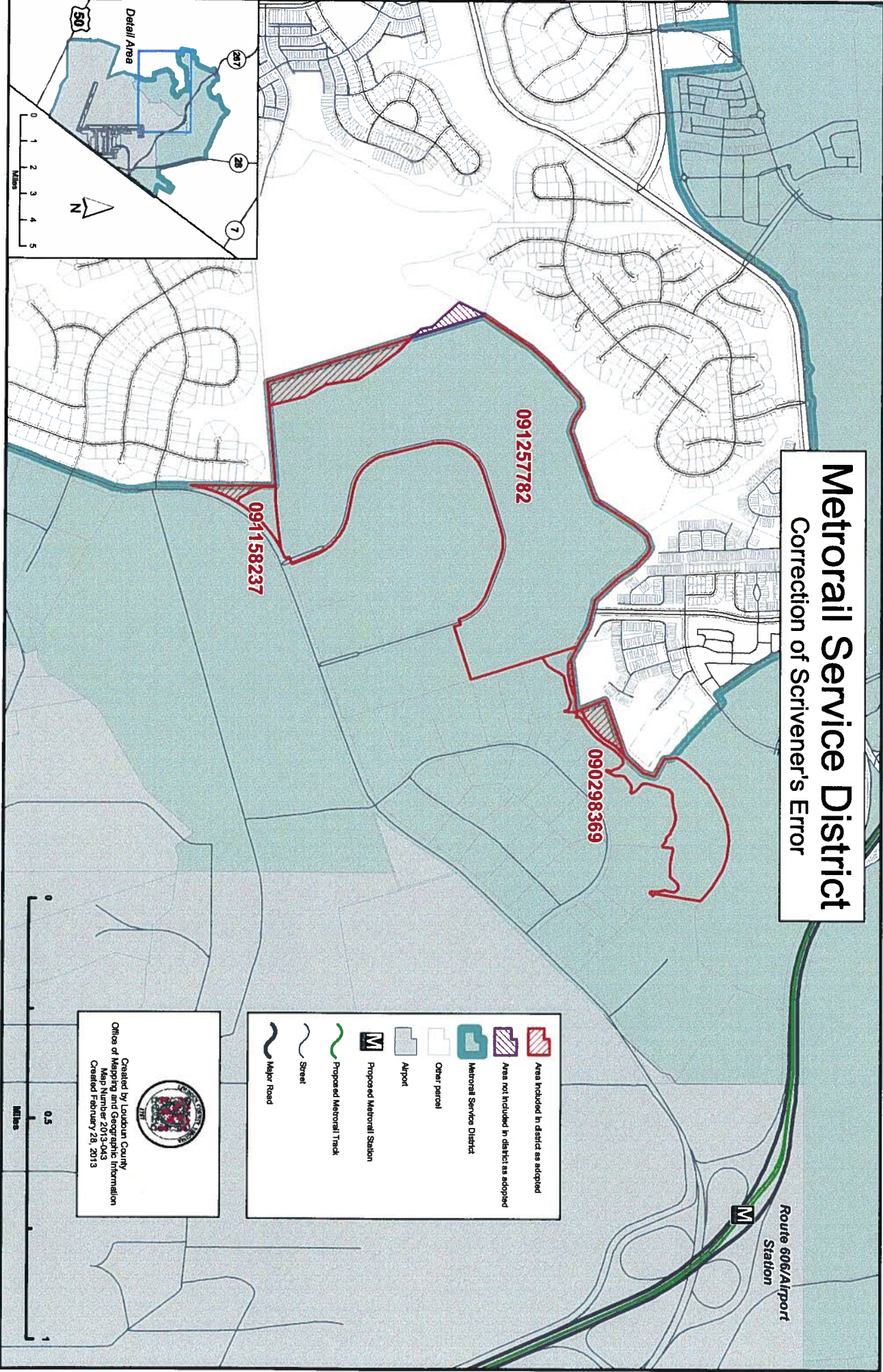
Voting on the Motion: Supervisors Buona, Clarke, Delgaudio, Higgins, Letourneau, Reid, Volpe, Williams and York – Yes; None – No.



DEPUTY CLERK FOR THE LOUDOUN
COUNTY BOARD OF SUPERVISORS

(7H-CORRECTION TO SCRIVENER'S ERROR ON APPROVED MAP FOR METRORAIL SERVICE DISTRICT)

Metrorail Service District

Correction of Scrivener's Error





 Created by Loudoun County

 Office of Mapping and Geographic Information

 Map Number 2013-003

 Created February 28, 2013