



Loudoun County



VIRGINIA

WHERE TRADITION MEETS INNOVATION

Virtual Public Information Meeting

Department of Transportation & Capital Infrastructure (DTCI)

Route 15 North-Montresor Road to Maryland State Line

Comprehensive Plan Amendment (CPAM)

Wednesday, June 23, 2021, 6:00-7:00 p.m.

The public outreach meeting will be conducted in a virtual manner due to COVID-19 restrictions and pursuant to the ordinance re-adopted by the Loudoun County Board of Supervisors on March 16, 2021.

Ground Rules

Introductions and Welcome

Overview Presentation

Enrolled Call-in Questions

Q&A Box Questions

Ground Rules

Introductions and Welcome

Overview Presentation

Enrolled Call-in Questions

Q&A Box Questions

Ground Rules

Introductions and Welcome

Overview Presentation

Enrolled Call-in Questions

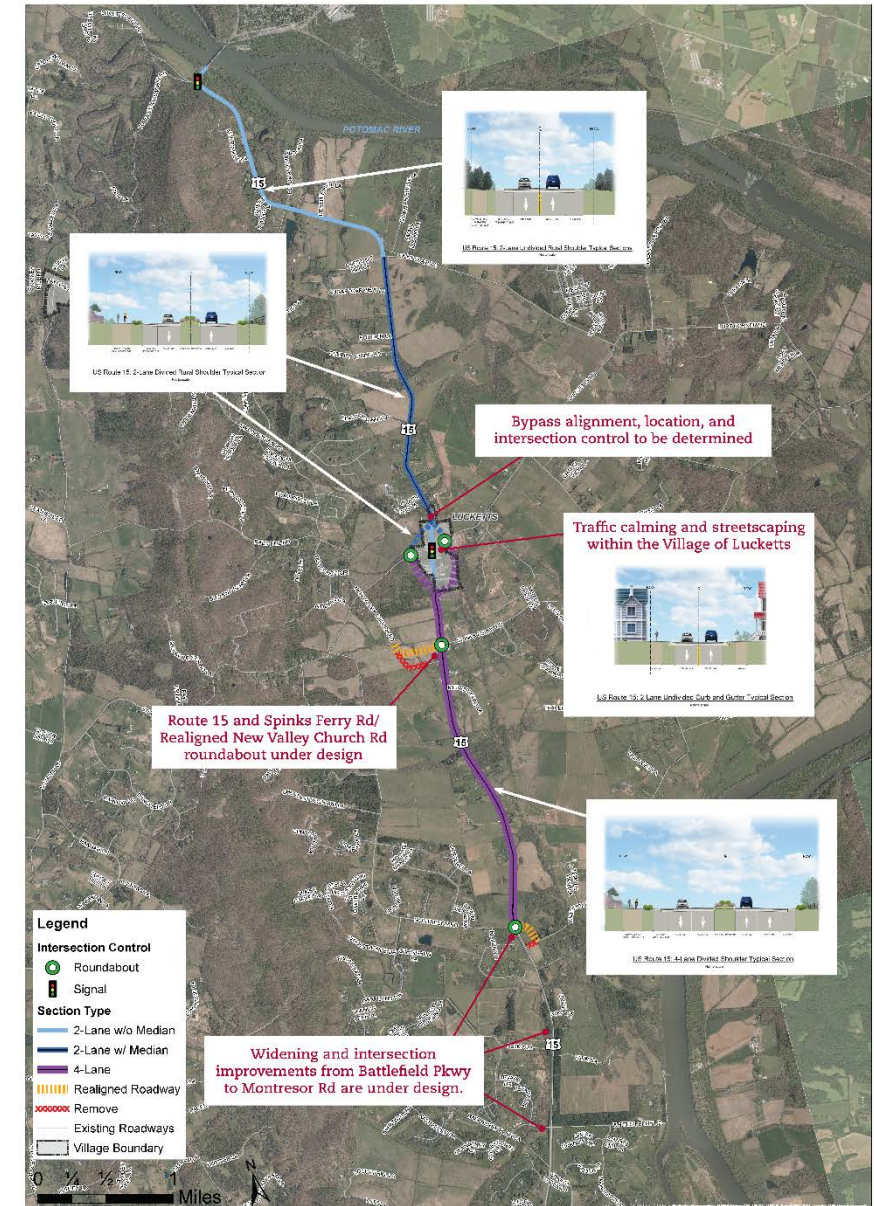
Q&A Box Questions

Background

- 2016: Board of Supervisors (Board) initiated the Route 15 Congestion Report.
- 2017: Findings presented to the Board.
 - Board expanded the report to include Safety & Operations Analysis (Whites Ferry Road to Maryland State Line)
 - Board initiated CPAM to widen Route 15 from Tutt Lane to Montresor Road.
- 2018: Board approved CPAM-2017-0002, to widen Route 15 from North King Street to Montresor Road.
 - Stakeholder Engagement meeting was held.
- 2019: Board endorsement of “Concept B” Safety and Operations Improvement.

CPAM / Concept B Improvements

1. Four lanes: Montresor Road to vicinity of Spinks Ferry Road.*
2. Two lanes with Median: North of Village of Lucketts to St Clair Lane.*
3. Traffic calming within the Village of Lucketts.
4. Bypass around Village of Lucketts.*
5. Roundabouts: Montresor Road, Newvalley Church Road, Stumptown Road/Lucketts bypass.
6. Realigned intersections: Montresor Road/Limestone School Road and Newvalley Church Road/Spinks Ferry Road.
7. Traffic signal at Lovettsville Road.
8. Bike, pedestrian and transit service opportunities.

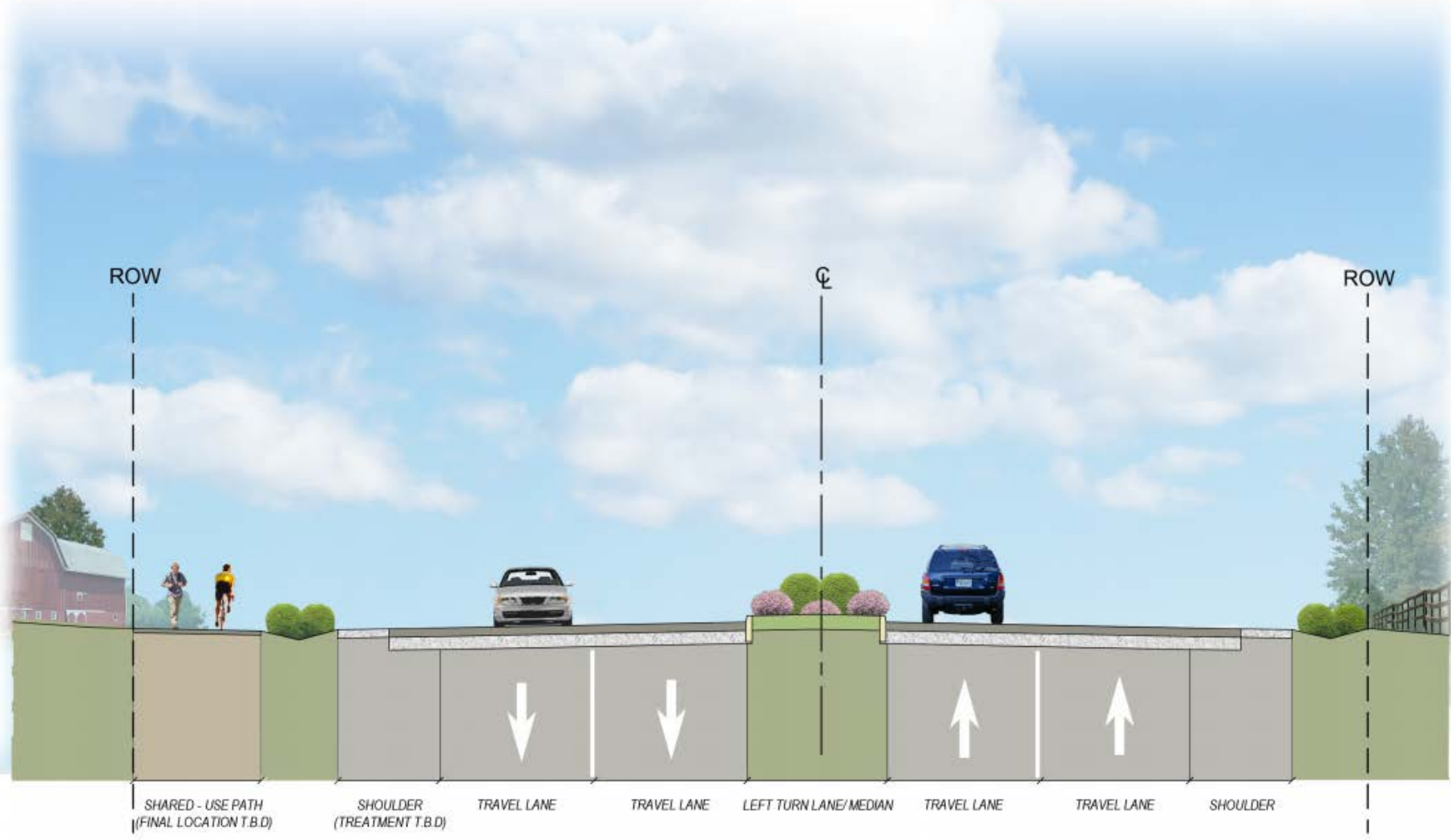
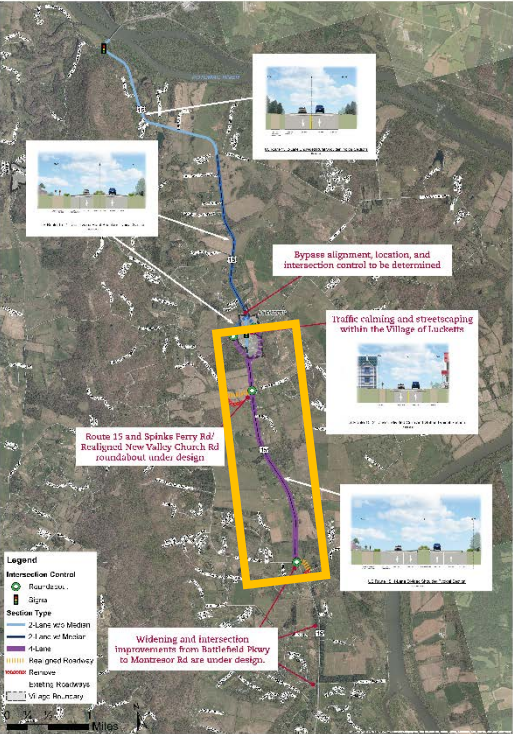


* Required for CPAM

Route 15/Bypass – Montresor Road to Stumptown Road/Lucketts Road

Note: Does not include widening existing Route 15 through Village of Lucketts.

Loudoun County VIRGINIA Route 15 North Comprehensive Plan Amendment



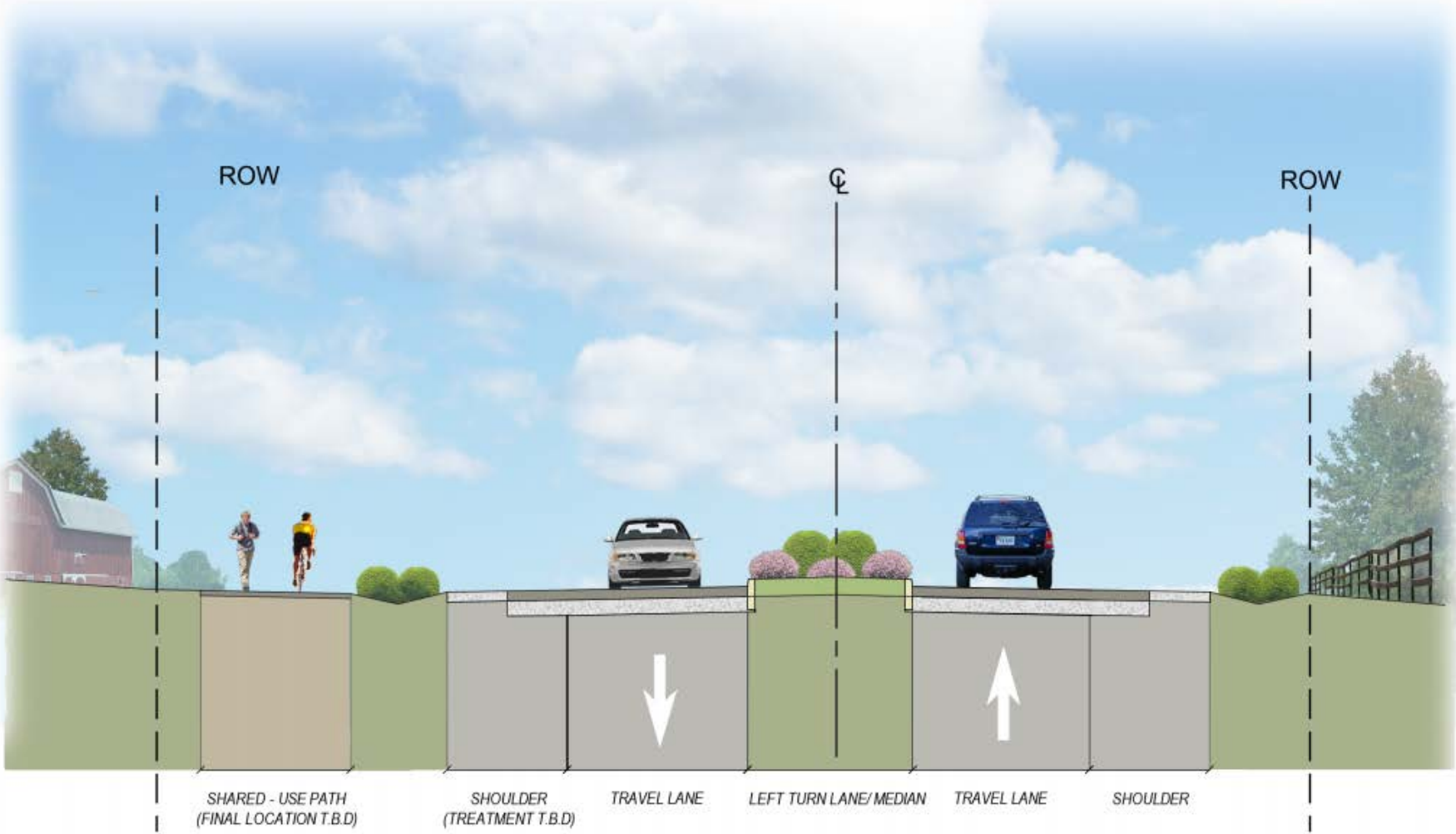
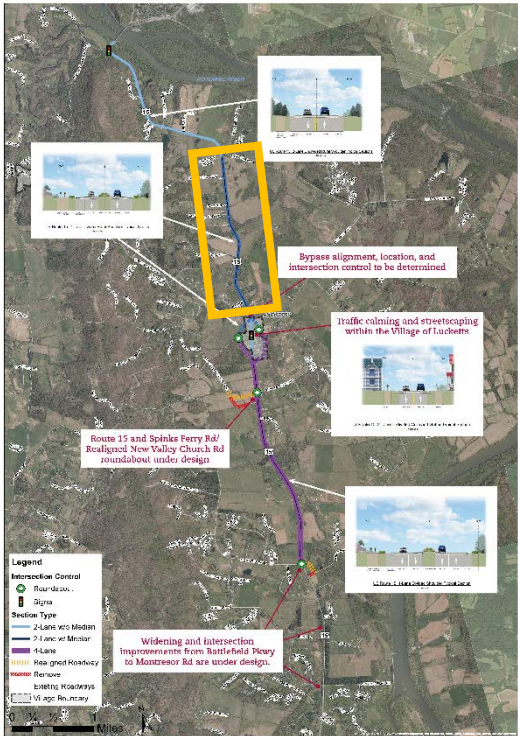
US Route 15: 4-Lane Divided Shoulder Typical Section

Not to scale

Route 15/Bypass – Stumptown Road/Lucketts Road to St. Clair Lane

Note: Does not include widening existing Route 15 through Village of Lucketts.

Loudoun County VIRGINIA Route 15 North Comprehensive Plan Amendment

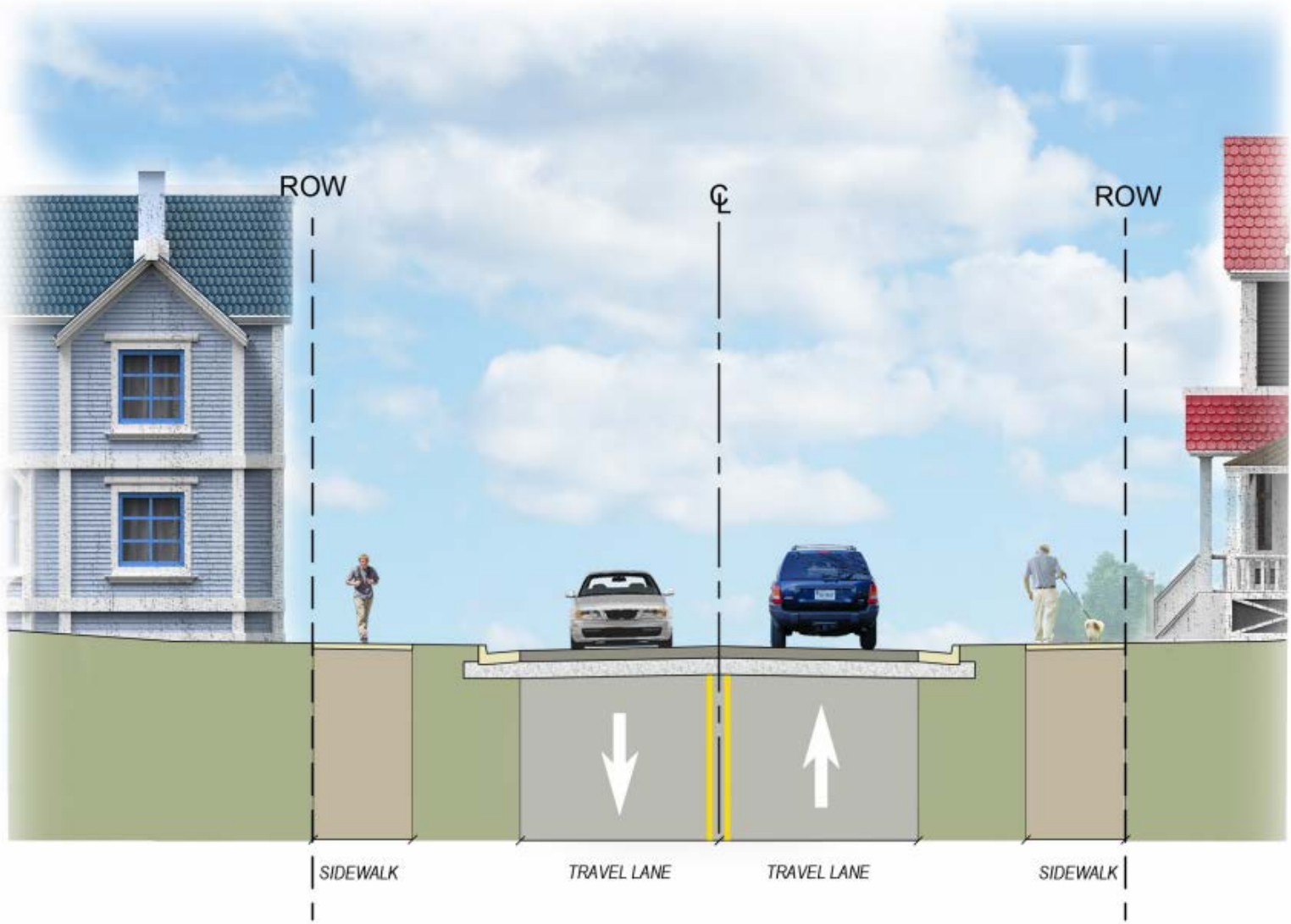
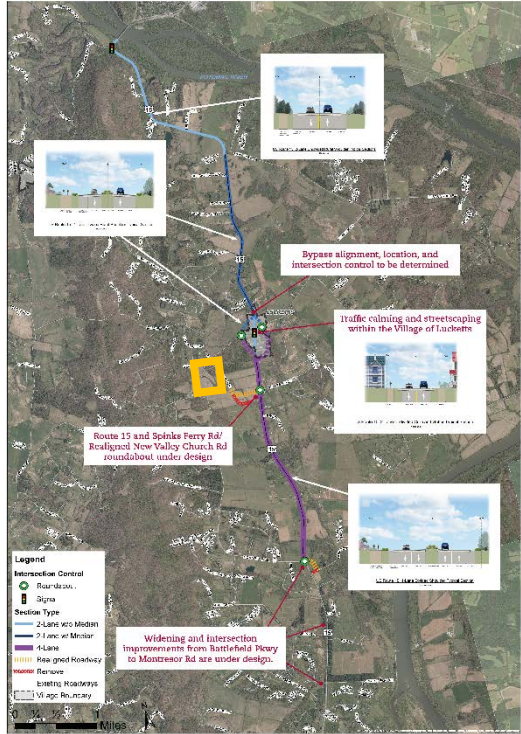


US Route 15: 2-Lane Divided Rural Shoulder Typical Section

Not to scale

Route 15/Bypass – Business (Village of Lucketts)

Loudoun County VIRGINIA Route 15 North Comprehensive Plan Amendment

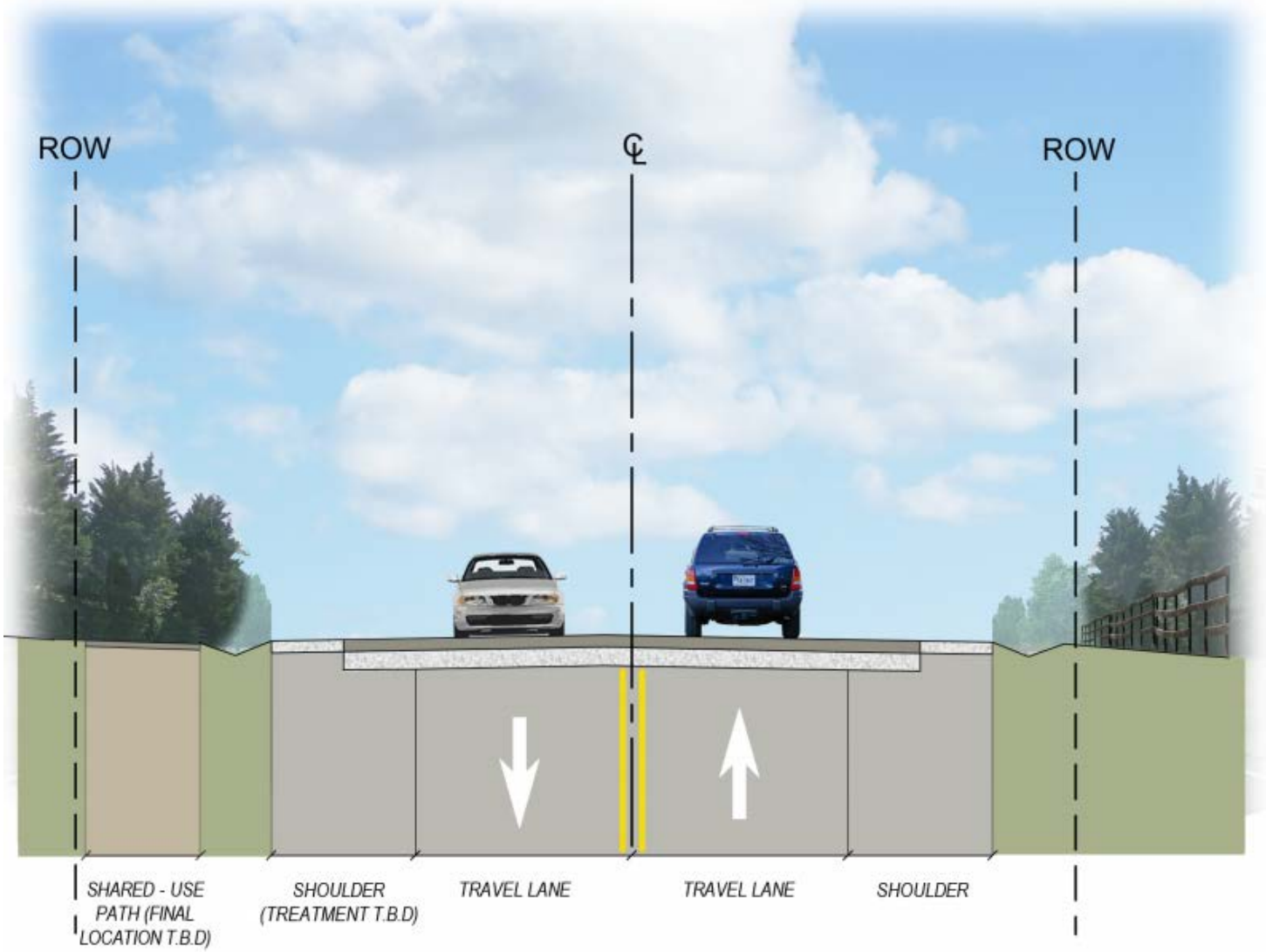
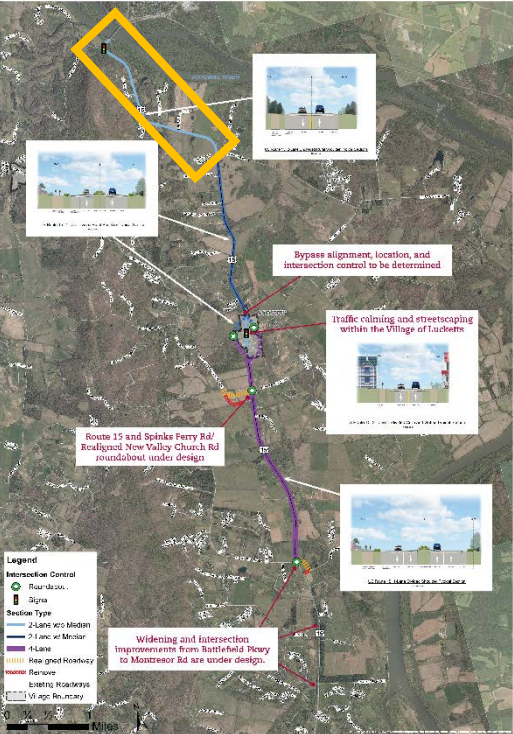


US Route 15: 2-Lane Undivided Curb and Gutter Typical Section

Not to scale

Route 15/Bypass – St. Clair Lane to Point of Rocks Bridge

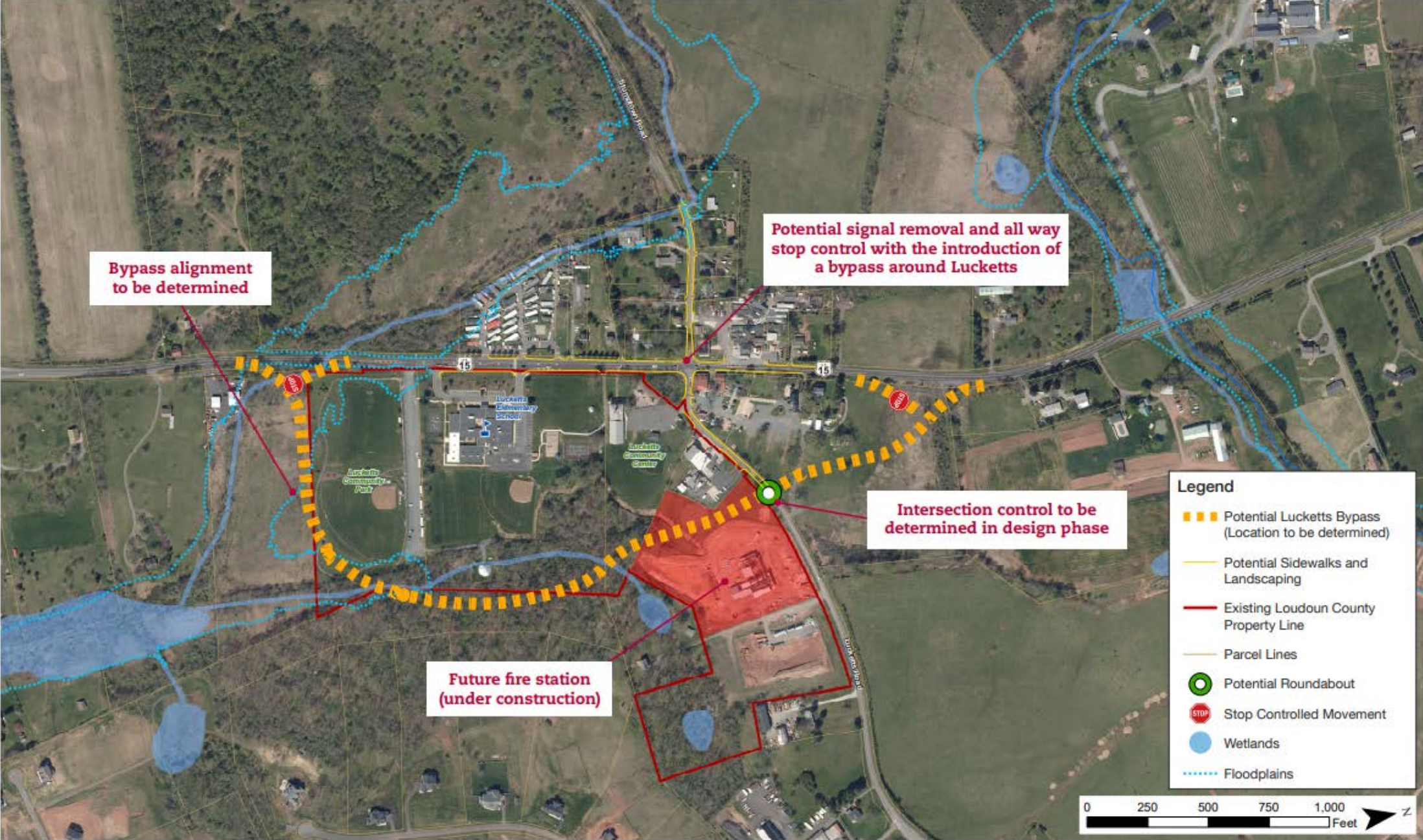
Loudoun County VIRGINIA Route 15 North Comprehensive Plan Amendment



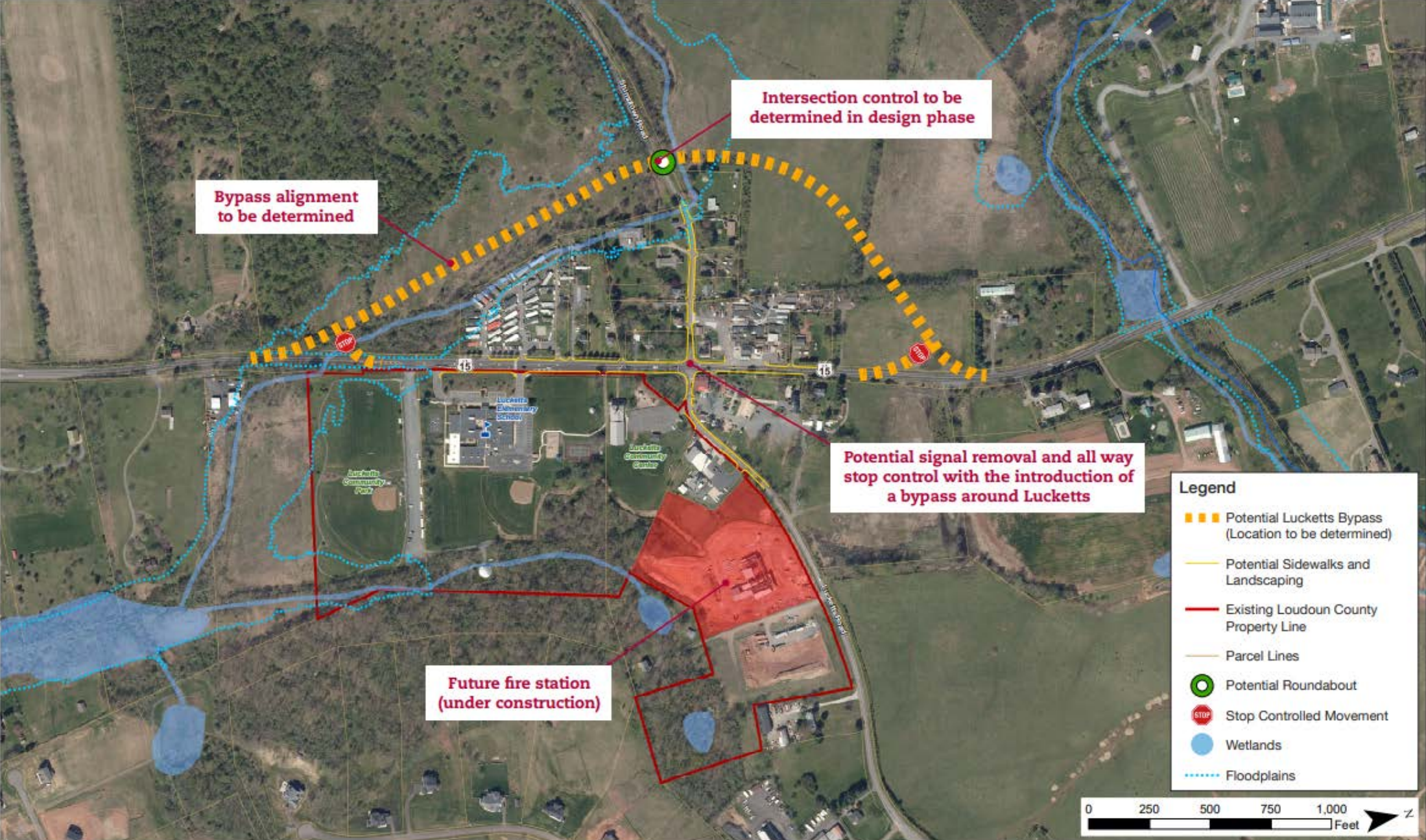
US Route 15: 2-Lane Undivided Rural Shoulder Typical Sections

Not to scale

Village of Lucketts – Potential Eastern Bypass



Village of Lucketts – Potential Western Bypass



Work Plan and Next Steps

- March 2021: CPAM Initiation
- June 23, 2021: Public Meeting
- Agency Referral
- Planning Commission Review, Public Hearing and Comment
- Planning Commission Recommendation
- Board of Supervisors Review, Public Hearing and Comment
- Board of Supervisors Action

Ground Rules

Introductions and Welcome

Overview Presentation

Enrolled Call-in Questions

Q&A Box Questions

TIMER

Two Minutes for Each Speaker



Ground Rules

Introductions and Welcome

Overview Presentation

Enrolled Call-in Questions

Q&A Box Questions

Q&A Questions

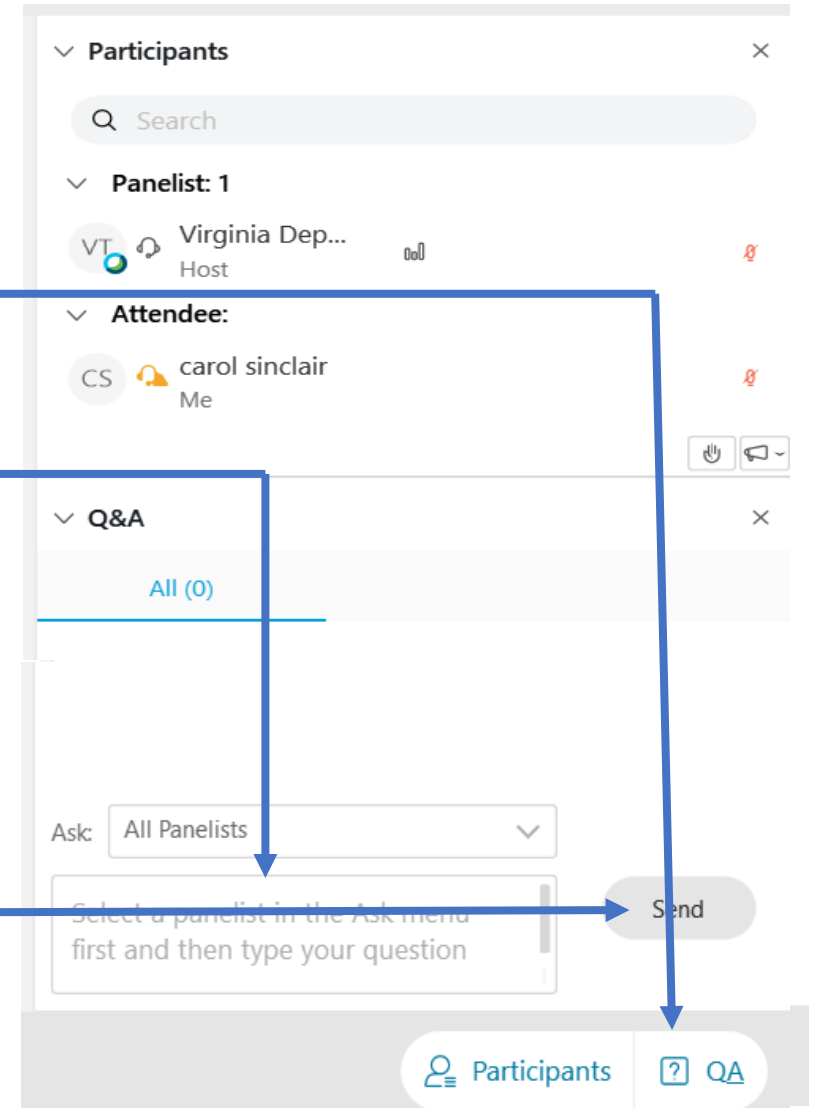
The project team is on the line and prepared to answer any questions that are asked through the Q&A box.

To access the Q&A box and ask a question:

- The Q&A window will appear in the right margin.
- In that window you will see a box to enter your question.
- Write your question in the box and click enter.

Q&A Questions

- To type a question:
 - Click the QA symbol
 - Type question in box to ask a written question
 - Ask: All Panelists and click Send
- All participants are muted.
- If you get disconnected, please attempt to rejoin the meeting.



Thank You

For more information:

 loudoun.gov/cpams

 dtci@loudoun.gov

 703-737-8624