



Loudoun County Parkway – Dulles West to Route 50

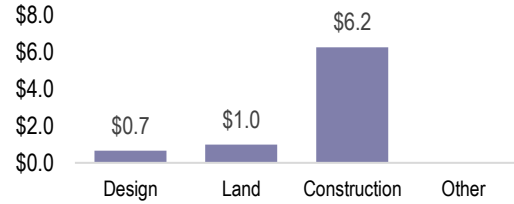
Details

Project Number: C02234
Election District: Blue Ridge, Dulles
Length: 1.1 miles
Project Type: Widening
Estimated Completion Year: FY 2024
Referendum: n/a

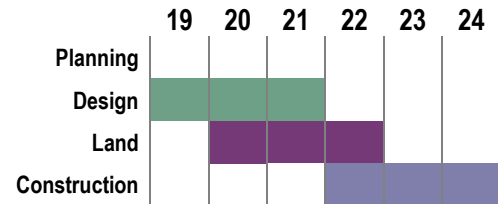
Background

This project provides for the planning, design, right of way acquisition, and construction of a southbound turning lane along Loudoun County Parkway from Dulles West to Route 50, continuing onto Route 50 westbound. Signal modifications for improved traffic flow will also be included in this project. This project also includes a shared use path on the west side of the turn lane.

Phase Costs in Millions



Project Phase Timeline by FY



Capital (\$ in 1000s)	Prior	FY						6 Year	Future	Project	
	Allloc.	2019	2020	2021	2022	2023	2024	Total	FYs	Total	
Professional Services	-	660	-	-	-	-	-	-	660	-	660
Land	-	990	-	-	-	-	-	-	990	-	990
Construction	-	4,931	1,308	-	-	-	-	-	6,239	-	6,239
Furniture, Fixtures & Equip	-	-	-	-	-	-	-	-	-	-	-
Other	-	-	-	-	-	-	-	-	-	-	-
Total Cost	-	6,581	1,308	-	-	-	-	-	7,889	-	7,889
Local Tax Funding	-	-	-	-	-	-	-	-	-	-	-
Local Tax Funding - Roads	-	-	-	-	-	-	-	-	-	-	-
Fund Balance	-	-	-	-	-	-	-	-	-	-	-
General Obligation Bonds	-	-	-	-	-	-	-	-	-	-	-
Lease Revenue Financing	-	-	-	-	-	-	-	-	-	-	-
Proffers (Cash)	-	-	-	-	-	-	-	-	-	-	-
Revenue Sharing	-	-	-	-	-	-	-	-	-	-	-
NVTA 70%	-	6,581	-	-	-	-	-	-	6,581	-	6,581
NVTA 30%	-	-	1,308	-	-	-	-	-	1,308	-	1,308
Smart Scale	-	-	-	-	-	-	-	-	-	-	-
Federal Grants	-	-	-	-	-	-	-	-	-	-	-
Gas Tax	-	-	-	-	-	-	-	-	-	-	-
CMAQ	-	-	-	-	-	-	-	-	-	-	-
Total Financing	-	6,581	1,308	-	-	-	-	-	7,889	-	7,889