



Loudoun County

VIRGINIA

WHERE TRADITION MEETS INNOVATION

Trail Assessment for Equestrian Use at Banshee Reeks Nature Preserve

Transportation and Land Use Committee

May 21, 2025

Background

- PROS Board Meeting 3.21.24
- TLUC Meeting 4.17.24
- Board of Supervisors Business Meeting 5.7.24

Background (continued)

- Statement of Work Committee
- Contract Award
- Process for Analysis

Background (continued)

- PROS Board Meeting 4.10.25
- PROS Board Meeting 5.8.25

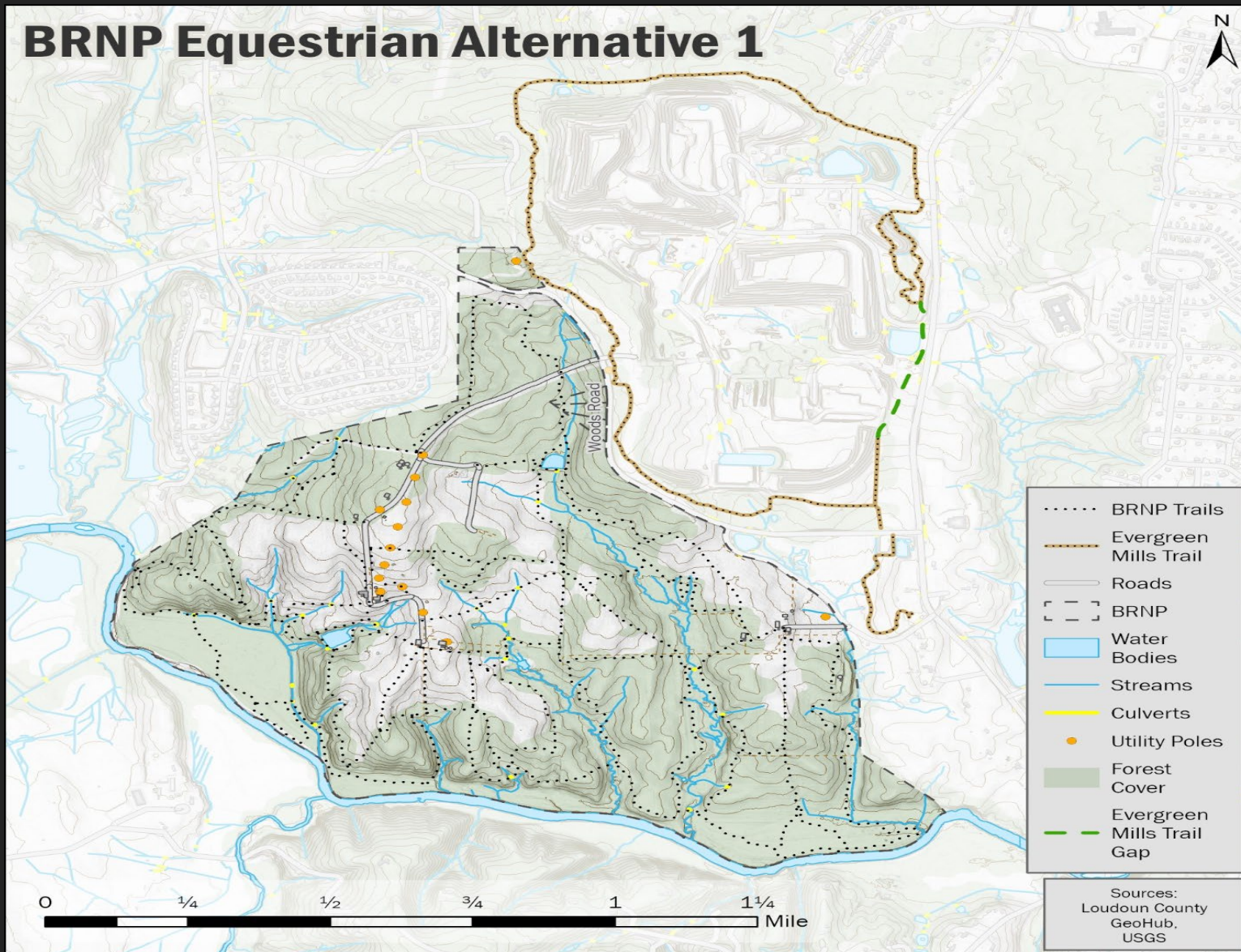
Issues

- Update to Banshee Reeks Nature Preserve Master Plan is required
- Funding for alternatives has not been identified

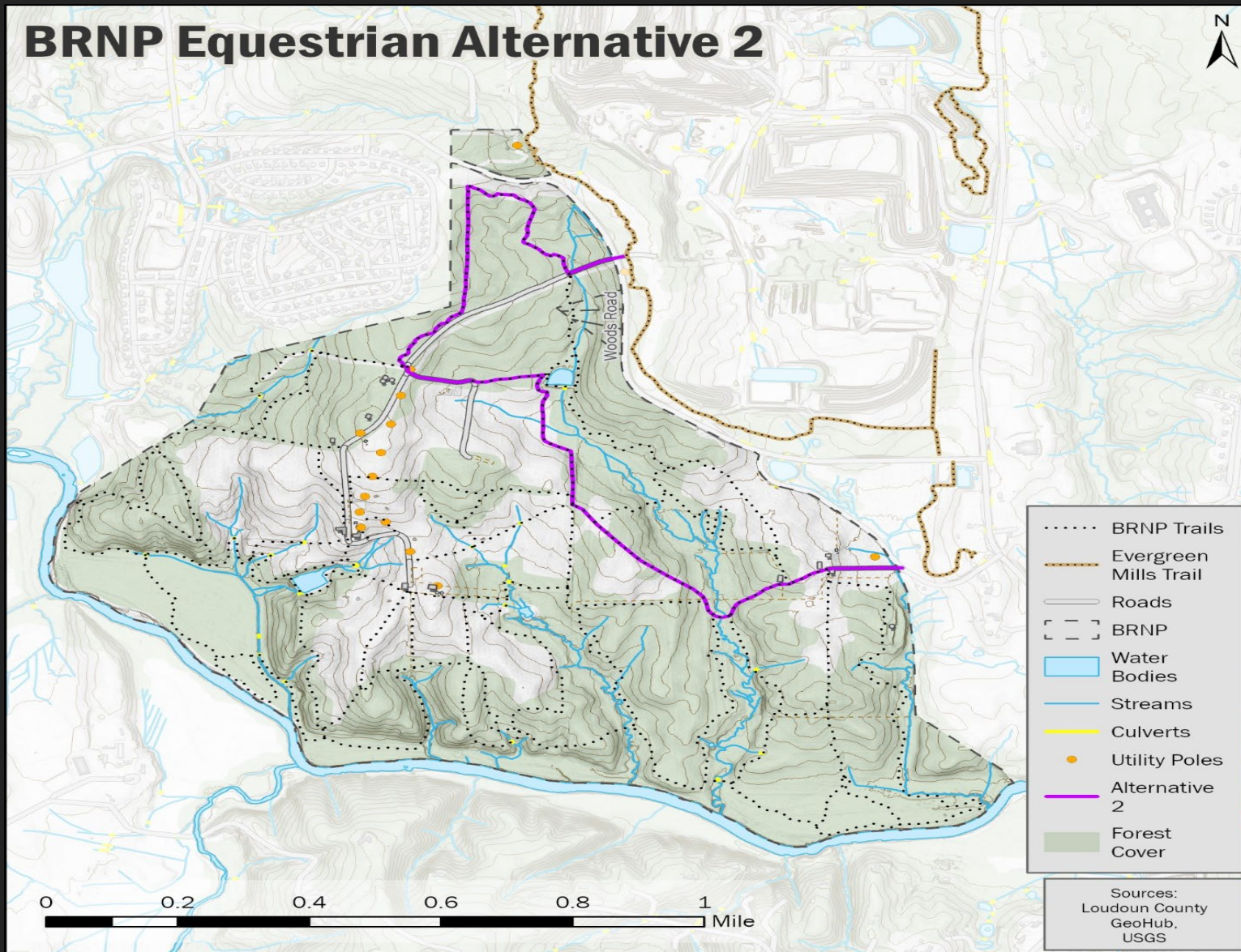
Fiscal Impact

Alternatives	Low Range	High Range	Mean
Alternative 2	\$248,550	\$347,000	\$297,775
Alternative 3a	\$275,566	\$386,856	\$331,211
Alternative 3b	\$301,558	\$424,028	\$362,793
Alternative 4	\$596,570	\$794,620	\$682,095

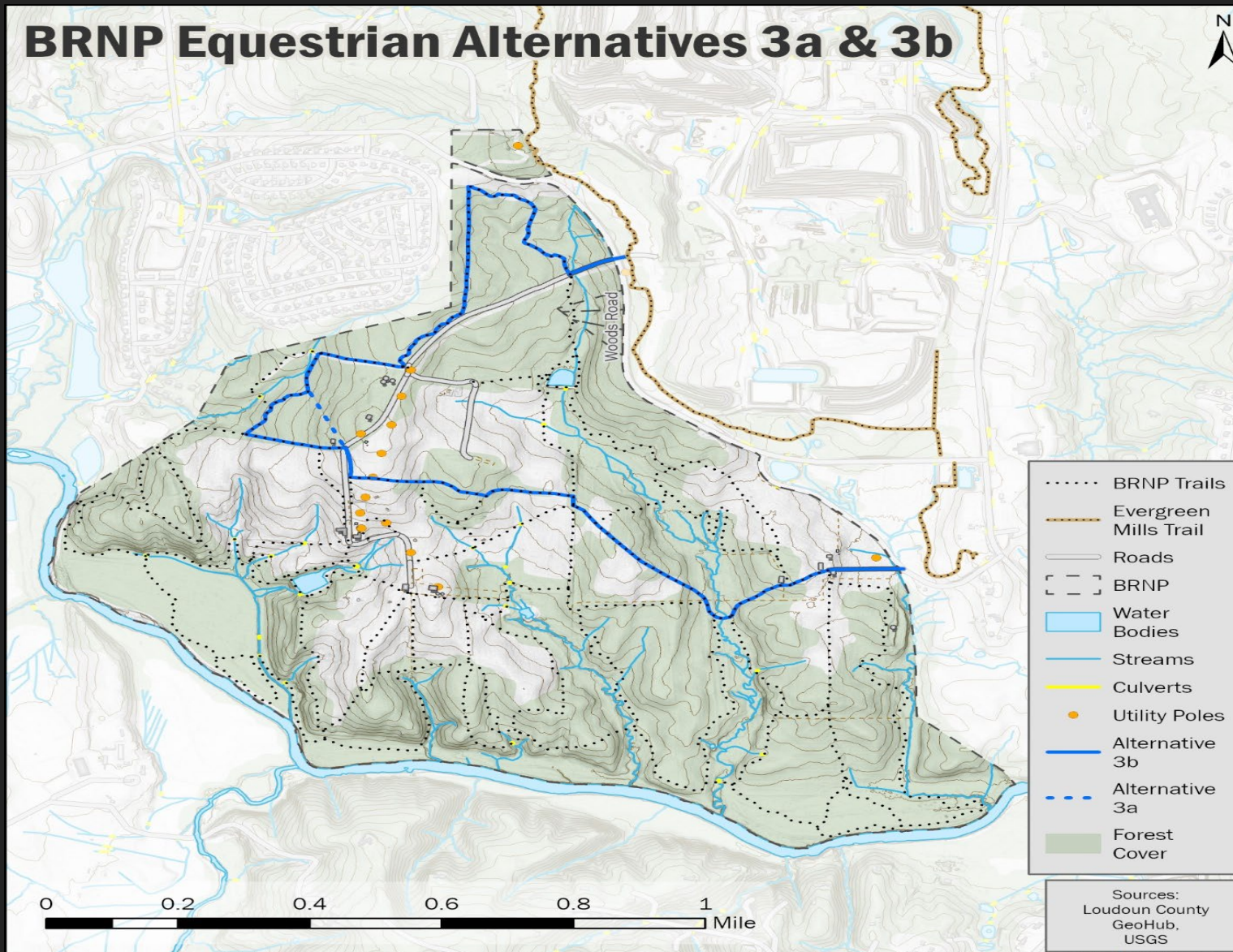
BRNP Equestrian Alternative 1



BRNP Equestrian Alternative 2



BRNP Equestrian Alternatives 3a & 3b



BRNP Equestrian Alternative 4

